

APPENDIX 4A
2010 RTP CAPITAL IMPROVEMENTS STATE HIGHWAY PROJECTS
(SHOPP)

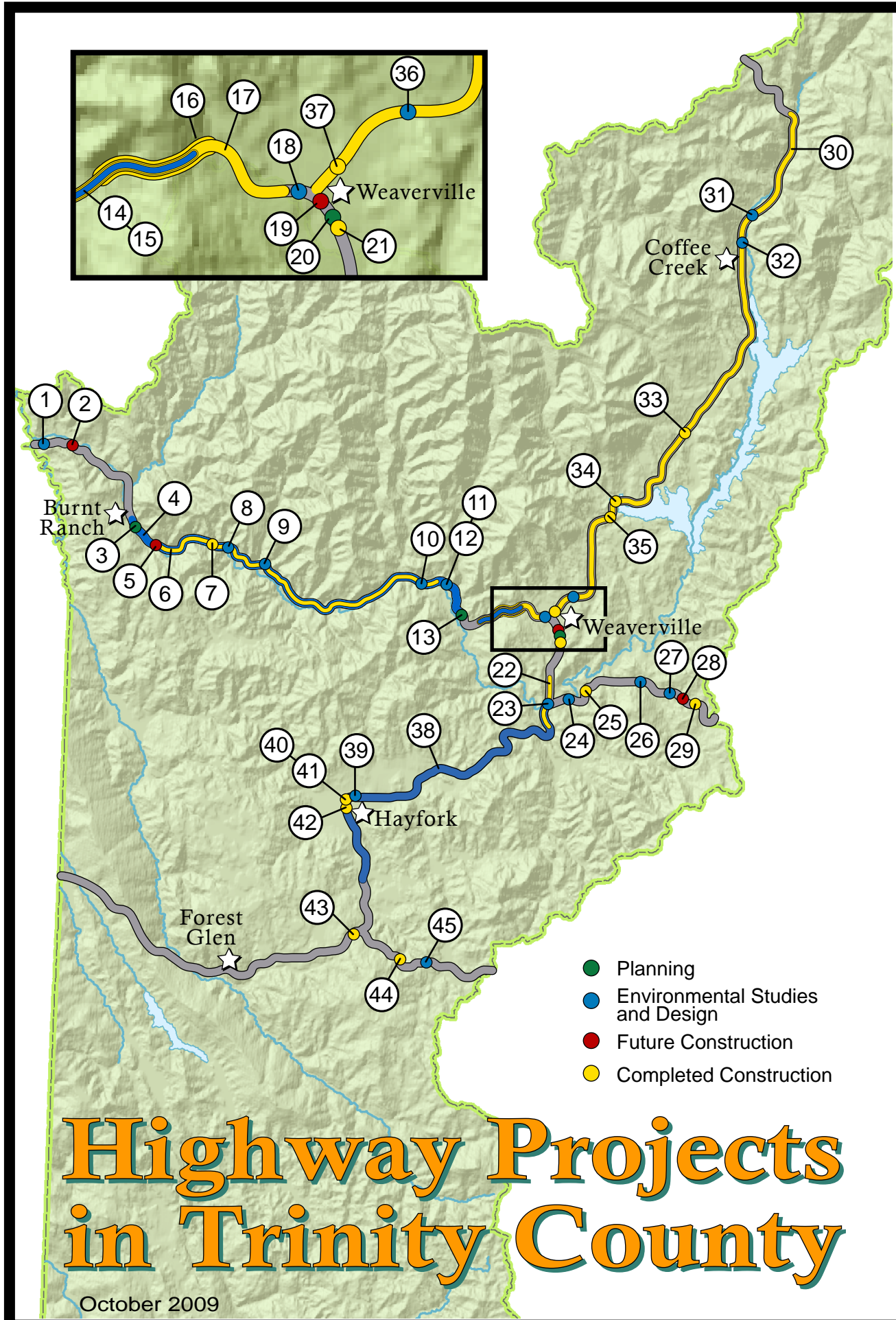
APPENDIX 4A

2010 RTP Short-Range Capital Improvements									
State Highway Projects (SHOPP)									
Funding Source	Project Number/ Proponent	Location (PM)	Description	Total Cost ¹ (\$1,000)	Awarded	Purpose/Need			
						System Preservation	Capacity Enhancement	Safety	Multi-Modal
STIP TE	4C960	007.1 / 007.7	Hayfork II TE Bikelane	\$970	\$0		x		
MAINTENANCE	2E680	011.0 / 019.0	Carr Crk Chip Seal	\$1,350	\$1,164			x	
SHOPP MINOR B	2E790	031.2	Weaverville Flashing Beacons	\$65	\$51			x	x
SHOPP MINOR B	0E920	033.3	Weaverville Musserhill Rd Culvert	\$48	\$0			x	
SHOPP MAJOR	2C990	VAR / VAR	Tri Riv & Minneehaha Crk Brs Br Rehab	\$6,981	\$4,555		x		
SHOPP MAJOR	3E710	030.4 / 030.7	Blue Pt Curve Improvement	\$960	\$0			x	
SHOPP MAJOR	2E060	036.7 / 037.1	Dubakella Curve Improvement	\$1,029	\$936			x	
SHOPP MAJOR	2E350	000.5 / 000.8	Enchilada Curve Improvement	\$1,885	\$0			x	
SHOPP MINOR B	4E400	002.2 / 002.6	Salyer II RSP	n/a	\$0	x			
SHOPP KPHASE	3E790	012.3 / 012.6	Collins Curve Improvement	\$1,732 est	\$0	x			
SHOPP MAJOR	3C080	013.3 / 013.8	China Slide Curve Improvement	\$5,317	\$3,893			x	
SHOPP MAJOR	2E200	019.2 / 019.6	Swede Crk Superelevation	\$1,494	\$0		x	x	
SHOPP MAJOR	37430	023.3	Big French Crk Br Rail	\$1,711	\$0		x	x	
SHOPP MINOR A	3E820	036.6 / 036.8	North Fork Curve Improvement	\$833	\$0		x	x	
SHOPP KPHASE	3E770	036.9 / 051.6	Junction City Prevent Maint	n/a	\$0	x			
MAINTENANCE	0E100	040.6	Drainage Restoration	\$100	\$0			x	
SHOPP MINOR A	4E310	045.7 / 046.0	Poison Pond Curve Improvement	n/a	\$0	x		x	x
SHOPP MINOR B	2E990	051.3 / 051.9	Weaverville Sidewalk Restoration	\$120	\$0	x			
SHOPP KPHASE	4E410	053.5 / 064.0	Weaverville East	n/a	\$0		x		
MAINTENANCE	2E860	061.0 / 064.0	800 Mhz Radio Repeaters	\$500	\$0			x	
MAINTENANCE	2E670	061.0 / 064.0	Steel Br / Deer Mtn Overlay	\$595	\$859	x			
SHOPP MINOR B	0E020	068.0 / 068.2	Trinity Dam Blvd Fish Ladder	\$75	\$0				
MAINTENANCE	1E600	VAR / VAR	Tri-299 Br Maintenance	\$1,378	\$1,119	x			
MAINTENANCE	2E260	VAR / VAR	Hot-In-Place Recycle-Var Loc	\$2,669	\$2,669	x			
MAINTENANCE	3E930	VAR / VAR	Fawn Lodge & Buckhorn Overlay	n/a	\$0	x		x	
Total Tier 1 SHOPP				\$28,080	\$15,246				

TRINITY COUNTY
LONG RANGE PROJECTS NOT PROGRAMMED IN THE SHOPP
CALTRANS, (DISTRICT 2)

SHOPP PROJECTS (Long-Range 2018-2020)

ROUTE	BEG PM	END PM	PROJECT LOCATION	TYPE OF WORK	CONSTRUCTION COST \$X1000	ANTICIPATED BEGIN CONSTRUCTION YEAR
3	30.0	85.0	Various Locations	Drainage Restoration	\$4,000	2020
3	VAR	VAR	Various Locations	Bridge Joint Replacements	\$1,500	2020
3	VAR	VAR	Various Locations	Pavement	\$15,000	2018
36	VAR	VAR	Various Locations	Pavement	\$5,000	2018
299	VAR	VAR	Various Locations	Bridge Joint Replacements	\$3,000	2020
299	3.8		Salyer Rest Area	Water and Sewer upgrades	\$2,000	2018
299	VAR	VAR	Various Locations	Pavement	\$26,000	2020
				TOTAL	\$56,500	



Map ID	Route	Postmiles	EA	Nickname	Begin Const	End Const	Const Cost
PLANNING							
3	299	11.1/11.9	1E370	Burnt Ranch Passing Lanes (Planning Only)			\$2,000,000
13	299	43.4	1E410	Tri. Co. Curve Realignment for STAA Access (Planning Only)			\$900,000
20	299	51.8	0E520	LO - Weaverville Fire Department Beacon (Planning Only)			\$85,000
ENVIRONMENTAL STUDIES AND DESIGN							
1	299	0.5/0.9	2E350	Whole Enchilada (Salyer) Curve Improvement	5-1-11	8-1-11	\$1,388,000
4	299	10.5/42.6	1E490	Trinity 299 Pullouts	7-1-10	11-1-10	\$750,000
8	299	19.2/19.6	2E200	Swede Creek Superelevation	5-1-11	11-1-11	\$1,307,000
9	299	23.3	37430	Big French Creek Bridge Rail	5-1-12	11-1-12	\$1,204,000
10	299	38.8/39.0	1E210	Horseshoe Curve	9-1-10	11-1-10	\$897,000
11	299	40.6	0E100	Drainage Restoration - Location 2	7-1-10	10-1-10	\$100,000
12	299	40.6	0E100	Drainage Restoration - Location 1	7-1-10	10-1-10	
15	299	45.0/49.0	1E920	Junction City Thin Blanket Overlay	7-1-10	10-1-10	\$750,000
18	299	50.7/51.5	4C950	West Weaverville TE Traffic Calming	6-1-10	10-1-10	\$158,000
23	299	58.0	1E600	Trinity-299 Bridge Maintenance - Location 1	6-1-10	10-1-10	\$1,378,000
24	299	59.7	1E600	Trinity-299 Bridge Maintenance - Location 2	6-1-10	10-1-10	
26	299	65.8	1E600	Trinity-299 Bridge Maintenance - Location 3	6-1-10	10-1-10	
27	299	68.0/68.2	0E020	Trinity Dam Boulevard Fish Ladder	6-1-10	8-1-10	\$80,000
31	3	70.7	2C990	Trinity River & Minnehaha Creek Bridge Rehab - Location 2	5-1-11	10-1-12	\$6,849,000
32	3	68.5	2C990	Trinity River & Minnehaha Creek Bridge Rehab - Location 1	5-1-11	10-1-12	
36	3	33.3	0E920	Musserhill Road Culvert	7-1-10	8-1-10	\$60,000
38	3	0.2/28.3	2E050	Deer Lick Springs Culvert Replacement	7-1-10	9-1-10	\$200,000
39	3	7.1/7.7	4C960	Hayfork II TE Bike Lane	7-1-12	12-1-12	\$1,033,000
45	36	36.7/37.1	2E060	Dubakella Curve Improvement	9-1-10	10-1-11	\$1,100,000
IN CONSTRUCTION							
2	299	2.2/2.6	4C360	Salyer Curve Improvement	5-1-09	9-1-09	\$2,693,000
5	299	13.3/13.8	3C080	China Slide Curve Improvement	6-17-09	11-1-09	\$5,332,000
19	299	51.3/51.9	1E170	Weaverville Sidewalk Repair	10-1-09	12-1-09	\$200,000
28	299	69.3	1E090	Drainage Restoration - Near Trinity Dam Boulevard	8-1-09	10-1-09	\$50,000
COMPLETED							
6	299	14.0/39.7	1E720	G11 Big Bar June 2008 Fire			\$780,000
7	299	18.7/18.9	0E150	Italian Creek Shoulder Widening			\$901,000
14	299	45.0/49.0	1E940	Seal Cracks			\$100,000
16	299	47.0/49.0	0E900	G11 Oregon Mtn Grind & Replace AC			\$100,000
17	299	48.6/50.9	0C220	Oregon Mountain Fire			\$423,000
21	299	51.9	0E340	Weaverville Rock Wall			\$30,000
22	299	55.7/57.7	28853	Rocky Point Passing Lane			\$4,200,000
25	299	60.8/61.3	39000	Steel Bridge Road Left Turn Lane			\$1,146,000
29	299	69.5/70.6	3846U	Sandhouse Passing Lanes & Chain-on Area			\$4,205,000
30	3	3.8/79.4	0E310	Bridge Deck Maintenance & Thin Blanket Overlay w/ Digouts			\$5,500,000
33	3	53.7	37800	Stuart Fork Bridges - Location 2			\$5,332,000
34	3	43.9	37800	Stuart Fork Bridges - Location 1			
35	3	42.2	2C300	Tannery Gulch Campground Eroded Slope			\$45,000
37	3	30.9/32.0	0E120	Weaverville 3 Overlay			\$760,000
40	3	6.3/6.8	36410	Hayfork Creek Bridge Scour			\$5,432,000
41	3	6.6	0E980	Hayfork Culvert			\$16,000
42	3	6.2	35090	Hayfork Maintenance Station			\$4,300,000
43	36	28.6	3C610	Peanut Site Distance Improvement			\$117,000
44	36	33.5/33.9	3C350	Milt Apple Culvert Upgrade			\$88,000

Highway Projects in Trinity County

October 2009

